

President's Greeting



Greetings! I hope your 2008 finished on a positive note and your 2009 is looking good. I know that we have a wonderful convention to look forward to in just over 2 months, and that many people are working to make it possible. So, I'd like to start off with a thank you to all of you who submitted your research for presentation, to those of you who took time (at the end of the semester when I know it's crazy-busy) to review submissions, and last but not least, to the SWPA executive committee and staff who are working constantly behind the scenes on all sorts of details to

continued on page 2



Applied Column: Courtroom Basics

Jose' Levy, Lawrence Dilks, Athena Arthur & Shelley Blancett
Fielding Graduate University & Counseling Services of Southwest Louisiana

Over the last 30 years the scientific training of psychologists and the empirical nature of psychological assessment has propelled the profession into a premier forensic position. In both the criminal and civil systems the opinions of psychologists have been considered equal to or more significant than other mental health professions.

Forensic activities occur in many settings other than the courtroom. Psychologists are often required, through a subpoena, to participate in various activities. Psychologists can be assigned to conduct interviews, participate in sanity hearings, conduct evaluations, or engage in other activities the judge mandates. Frequently a discovery deposition happens to clarify the opinions of the psychologist and to review written data.

Every practicing psychologist must now possess a basic understanding of courtroom
continued on page 3

INSIDE THIS ISSUE

- 1 President's Greeting
- 1 Applied Column: Courtroom Basics
- 2 Hello Again from Psi Chi
- 4 Message from a Past President: Charlie Burdsal
- 5 APA Harry Kirk Wolf Lecturer
- 6 SWPA at Gunter Hotel in San Antonio
- 7 Convention Highlight: State Representatives
- 8 SWPA Continuing Education Workshops
- 8 Southwestern Comparative Psychological Association
- 9 Invited Speakers from our Adjunct Organizations
- 10 Mark Your Calendars
- 11 The Council for the Texas Association for Infant Mental Health
- 12 Student's Corner: Strategies for Getting the Most from Your Convention Experience
- 13 Upcoming Conferences and Events of Interest

President's continued from page 1

make it all come together. I'd also like to give a special thanks to Dr. Michael Coon, who has been working for many months now on improvements to the website and a complete update of the backend code for the member database, submission process, review process, and program-building process. It's been a massive project (understated), and although there have been a few small glitches along the way, overall it's been an amazingly smooth transition resulting in much improved usability. Finally, another big thanks to Cathy Grover, who formatted this newsletter.

Speaking of, this newsletter issue will contain some regular columns as well as serve to highlight some of the convention events. We hope that you share it with your colleagues and help us bring more new faces (or returning familiar ones) to the annual convention. Please remember that we are always looking for member accomplishments and research endeavors to highlight, so please send us items and suggestions for upcoming newsletters.

The election ballots will be released in early February. All dues-paid SWPA members are eligible to vote. Please take the time to read the election statements of the candidates and to submit your vote.

Have a wonderful spring semester. I hope to see you in San Antonio!

Lauren Scharff

SWPA President, 2008-2009 *



Hello again from Psi Chi,

I hope this finds that most of you have wrapped up commitments from last semester and are happily engaged in the new semester. I just wanted to give you a quick update on Psi Chi events at the upcoming SWPA conference in San Antonio. Although the program is still being built (hence I do not have exact dates and times for events), I do have a few more specifics that I am hoping will entice you to mark your calendars, get online and register, and plan to join us in San Antonio. Encourage your co-members of Psi Chi and other student colleagues to come even if they are not presenting. If you have never been to the Alamo city, it is well worth the trip.

Anyway, I am pleased to report that Psi Chi submissions were up substantially this year from last year. We had so many quality submissions, in fact, that we will have two paper sessions and add a second poster session! The topic range is amazing and offers something for everyone. Don't forget that Psi Chi conducts a research competition at the conference. If you have a Psi Chi presentation accepted (you should have received notification of your submission status a few weeks ago), there is no need to do anything else. The abstract you submitted will automatically be entered into the competition. The awards are based on what you submitted and NOT on the presentations at the conference itself. We encourage ALL Psi Chi presenters to come to our Psi Chi Awards Ceremony (check the program when it comes out for day and time) to see who wins these prestigious awards - it might be you! - and to congratulate the winners.

In addition to the student research presentations, the Psi Chi program at the convention will include several other events. Dr. Sam Gosling has agreed to be our Distinguished Speaker. Dr. Gosling will be discussing his work on "personality in

continued on page 4

SWPA Staff Position Openings

SWPA Staff / Appointed Positions

Webmaster: Beginning in July, 2009 the position of SWPA webmaster will be available. Applicants should have working knowledge of html, css, php and MySQL. Duties will include making updates to the web site and creating modifications as necessary to promote usability. Annual stipend will be \$800. We would like to have the incoming webmaster work with the current webmaster during the spring semester so that she/he can become familiar with the code prior to starting in July.

procedures and litigation, as participation is no longer a voluntary activity but will be required by the court as the profession is viewed as a vital necessity in bringing about a resolution and social justice. We present the basics of court procedure that every psychologist should be aware of.

The courtroom follows the adversarial approach rather than the scientific method. The adversarial approach consists of two sides each arguing that their perspective, and only that viewpoint, is correct. In court, each side presents the most persuasive argument they can muster. This, more often than not, involves presenting data supportive of one view point, emotional manipulation, distraction, and maybe a little deception. As most psychologists have developed skills in assessment, counseling and research, attorneys have developed skills in questioning witnesses. Questions in a deposition may be straightforward, but frequently are circumspect and may imply information or a position the speaker did not intend. This information may be presented later in court in a new or different context to support the opposing attorneys' view. Many psychologists find this disturbing, as they are accustomed to a rational approach free of banter and emotion.

The authors have some suggestions for preparing for depositions and courtroom testimony:

- First, and beyond anything else, never lie. The consequences of lying under oath are catastrophic.
- Never destroy or modify records. There are ways to detect this and the consequences for manipulation are very serious.
- Prepare for court as if you preparing for an exam. The old saying goes, "Chance favors the prepared."
- Dress professionally and conservatively. Be aware that some judges are very particular regarding what they deem appropriate court attire. Find out from the attorney what the judges' preferences are. Navy, brown, blue and gray are appropriate. Do not dress flamboyantly.
- Make sure the question is understood before answering. If there are multiple questions within a larger question, ask for each to be presented individually.
- Answer questions succinctly but completely. Never offer additional information.
- Do not guess at data, dates, and outcomes. Maintain an empirical position and offer probabilities and possibilities.
- Do not joke around in a deposition or on the witness stand. Clever attorneys will be jocular in the deposition to encourage like behavior only to degrade the psychologist with it at trial.
- Be careful not to provide contradictory testimony. It may result in dismissal as an expert. To prevent this from happening request a copy of a previous deposition and review it the day before testifying.
- Develop good boundaries and testify that certain issues are beyond your training and experience or beyond the scope of psychology. For example, respond, "Your question is beyond the scope of my license and I will defer to the treating physician regarding questions concerning medication management."
- If records have been sent from other professionals, such as psychiatrists, orthopedists, neurologists, etc., read each and become familiar with the diagnoses and opinions offered. Index and tag all material to have it at the deposition and in court.
- Bring research to the deposition but do not voluntarily offer it unless necessary. Once something is introduced

continued on page 5

Message from a Past President



I've been going to the SWPA convention for quite some time (the last one I missed was 1970). I've watched it changed in cycles many times. The last few and especially this past year there has been a major "up-swing" in the organization. The major operation of SWPA is now being primarily carried out by elected individuals. We are financially stable - at least for the moment. The website has under gone a MAJOR and long needed revamping. Affiliated societies such as SAMR, Psi Chi, SCPA, CTUP, etc. have been willingly accommodated by SWPA, making for a stronger meeting. There is an energy about SWPA (primarily generated by our current president) that I haven't seen for years.

Now comes the sales pitch. Be involved! Come to the meetings. If at all possible, stay at the convention hotel. Present your research. If you are a faculty member, bring your students and have them do a poster or talk next year.

We also need people to go beyond that. I attended for many years without any intention of being "involved" with SWPA's operation until a past president twisted my arm. My experience as president was rewarding. I've met people I would not have met otherwise. There are opportunities to be involved either as president elect, as a state representative, or as a volunteer at the convention. Don't wait for someone to nominate you; if you are interested, nominate yourself. A strong executive committee and presidents' council makes for a stronger SWPA.

I'm looking forward to an excellent meeting in San Antonio.

See you there!
Charlie Burdsal
Past President, 2006-2007 *

Psi Chi continued from page 2

everyday contexts." In addition, Dr. Gosling will be available for an informal chat in the Psi Chi Hospitality room following the session.

We will be hosting a Question and Answer panel on graduate school. Students please come hear faculty and admission committee members respond to your top 10 questions about graduate school and getting in to graduate school. Several of these individuals will also host informal conversations in the Psi Chi Hospitality Room following the session.

Another exciting Psi Chi hosted panel will discuss diversity issues as they relate to student success (or barriers to success) in higher education. Following the same pattern as above, we plan to have one or more of these individuals follow up this important session with an informal conversation in our Hospitality room.

Psi Chi will again help host the SWPA social on Thursday, April 2 from 5:00 – 7:00 pm. At this social there will be complementary hors d'oeuvres, complementary student drink tickets from Psi Chi (for non-alcoholic beverages), door prizes, and great opportunities to meet faculty and students from other universities in our 9-state region. Ongoing throughout the conference there will be a place for you in our Hospitality Room to relax and chat with other Psi Chi students and members from the National Office, grab a snack or soda, and check out some Psi Chi merchandise. Of course, there are also a large number of other invited speaker sessions and other presentations on the general SWPA program. The two-and-a-half days will go by quickly!

Please join us in San Antonio and, as always, let me know if you have any comments, questions or concerns that I can address as your Southwestern Regional Vice President for Psi Chi.

Best,
Randall

The logo for Psi Chi, consisting of the Greek letters Psi (Ψ) and Chi (Χ) in a stylized, serif font.

Randall E. Osborne
Professor of Psychology
Texas State University-San Marcos
Psi Chi Southwestern Regional Vice-President *



APA Harry Kirke Wolfe Lecture

We are excited to welcome **Dr. Don Forsyth**, the Colonel Leo K. and Gaylee Thorsness Chair in Ethical Leadership in the Jepson School of Leadership Studies at the University of Richmond, Virginia.

Dr. Forsyth's talk, titled "*Teaching and Learning with the Self in Mind*," will address the question "Who am I?" This question is not a puzzling one for humans, whose unique capacity for self-reflection allows them to look inward to review their own qualities and then critique those qualities. This sense of self, and its influence on both teaching and learning, is the focus of Donelson R. Forsyth's Harry Kirke Wolfe Lecture. Forsyth will explore how the self—and the self's striving for enhancement—both helps and hinders students (and teachers as well) as they strive to achieve their educational goals.

Don, a social psychologist, studies reactions to success and failure, leadership, individual differences in moral thought, applications of social psychology in educational and clinical settings, and group dynamics. He has written and edited several books, including *Our Social World* (1995), *The Professor's Guide to Teaching* (2003), and *Group Dynamics* (2006). He is currently the president of APA Division 49, Group Psychology and Group Psychotherapy. *

Courtroom continued from page 3

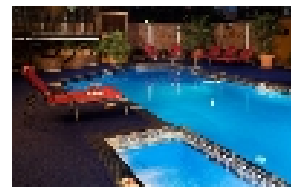
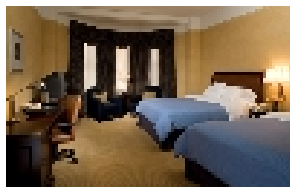
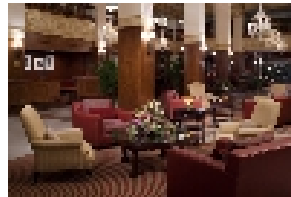
it cannot be withdrawn. Read the whole journal article before you introduce the research and not just the one or two statements that support a position, as there might be another section that contradicts that position.

- Be aware of any controversies within your area of expertise. Any controversies will be used by opposing counsel to discredit you or your position. An example of this would be the debate of reliability of flexible versus fixed neuropsychological batteries.
- Never make extreme statements such as, "All people have some depression in their lives", or "All people in Sweden attend church." There is always an exception to the rule and an opposing attorney will use the exception to discredit you.
- Be prepared for questions and commentary that are only marginally related to the issues at hand. "So Doctor, please describe the recent conflicts you have had with your colleagues", "Explain how the lighting in your office adversely affected the clients performance on the Rorschach." Even if these statements are withdrawn, the judge or jury has heard the subtle suggestion implied.
- Be prepared for personal attacks and statements regarding personal appearance, training and subtle digs concerning professional education. These remarks are made not only to intimidate but also to suggest that the opposing practitioner is better qualified.
- Never, never, never, allow yourself to become irritated, flustered or angry during the experience. (If you notice yourself getting angry by personal attacks or aggressive questioning, ask for a moment to consider a response.)
- Most importantly, when in doubt about a deposition or trial presentation, consult an attorney. Most have a videotape they use for explaining the processes and if they are issuing the subpoena they will be happy to explain the nuances of expert testimony. There are many books, articles and seminars on this topic and it is our hope this article will motivate greater exploration into this fascinating specialty. *



SWPA Convention Hotel: the Sheraton Gunter Hotel

Please make your hotel reservations prior to March 1, 2009! We rely on our members to stay at the convention hotel so that we can afford to hold the meeting there. Discounted room rates are available for SWPA attendees. For more information go to: http://www.swpsych.org/conv_dates.php



San Antonio

Consider staying at the convention hotel for an additional night (at the SWPA rates). San Antonio has many attractions you might want to explore following the convention, including "First Saturday" events, many of which are geared towards families. Visit <http://www.visitsanantonio.com/index.aspx>



Convention Highlight: State Representative Invited Symposia

We have a new type of session starting at SWPA 2009: State Representative Invited Symposia. In their second year of their term, our state representatives organize a symposium on a topic of their choice, inviting esteemed faculty from around the region and nation to participate. You can get more information on our website (Preview of Highlights) (http://www.swpsych.org/conv_highlights.php), but here is a bit of information to whet your appetite.



Dr. Arn Froese from Kansas has organized the symposium titled, **Teaching Psychology for Civic Responsibility in a Global Context**. His speakers include Kevin Hovland, Director of Global Learning and Curricular Change at the Association of American Colleges and Universities, Jonathan Iuzzini, from the Public Policy Studies Program affiliate at Hobart and William Smith Colleges, and Chrisanne Christensen, from Southern Arkansas University, and Arn Froese, Professor and Chair of Psychology at Sterling College.



Dr. Art Gillaspay from Arkansas has organized the symposium titled, **Guiding Animals over Remote Distances: An Odyssey of Operant Conditioning**.

In the 1960s, Animal Behavior Enterprises (ABE) developed animal-based intelligence gathering systems for the U.S. Government. One system used to remotely guide animals over long distances was based on a Keep Going Signal (KGS). The symposium reviews this innovative application of operant conditioning and discusses contemporary uses of the KGS. The speakers include Mr. Bailey (developer of ABE's original guidance systems), Dr. Gillaspay, Dr. Shawn Charlton, and Dr. Chris Spatz.



Dr. Bret Roark from Oklahoma has organized the symposium title, **A Multi-dimensional Perspective of People's Sexual Behavior**. The individual presentations of this symposium use empirical data from among college campuses and the US Department of Health to identify and explain different sexual behaviors (e.g., infidelity, jealousy, and dysfunctions). Speakers include Dr. Michael Walker, Dr. Theo Joseph, Dr. Jeremy Heider, Dr.



SWPA to Present Continuing Education Workshops this April

SWPA CEU Committee: Dr. Larry Dilks, Dr. Michael Walker, Dr. David White, Dr. Marilyn Pugh, Dr. Lauren Scharff

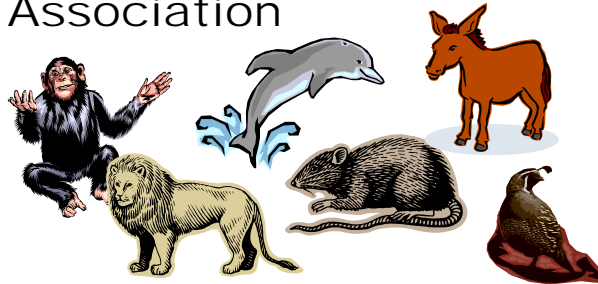
This year's annual convention will see the resurgence of continuing education activities at SWPA. Continuing Education Units (CEU's) were once offered at the annual convention but the program was discontinued due to cost and limited participation. Due to renewed interest, the Executive Committee decided to initiate a new CEU program in 2009. The CEU program received a boost from the aid of David White, Executive Director of the Texas Psychological Association. He is coordinating the American Psychological Association (APA) approval of the SWPA CEU sessions. This approval is expected and, if granted, all state licensing boards will accept the certificates for annual training requirements.

To receive CEU credit a participant must register for the conference and also pay a CEU fee of \$100. The fee is to cover the cost of APA approval, managing the workshop program and publishing the certificates. Those selecting to participate will be able to attend all the offered CEU workshops for this flat fee and receive a certificate upon departure. All convention attendees are welcome to attend the sessions, although only those who register for the CEU credits will receive the certificates.

At this time six SWPA workshops have been forwarded for APA approval by the Continuing Education and Program Committees. These workshops include: Mastering the Mental Status Examination (1.5-hour session), Ethical Principles and Beyond (3-hour session), Parenting, Stress, Coping and Communication (2-hour session), Ethical Practice=Multicultural Practice (3-hour session), Diversity and Clinical Work (2-hour session), and, Guiding Injured Soldiers to Successful Rehabilitation (1-hour session). TPA plans to offer additional workshops, all of which will be covered in the CEU registration fee.

SWPA had endeavored to establish a training package which is unusually economical with an average cost per CEU hour of only nine or ten dollars; a significant savings as compared to other training activities. These sessions will be offered across the 2.5 days of the convention. Specific times and days will be noted in the program, which will be available online by the end of February. *

The Southwestern Comparative Psychological Association



The Southwestern Comparative Psychological Association (SCPA) has served as an excellent venue for students and scholars in the region who are interested in a variety of behavioral questions at SWPA for many years. Although our group is relatively small, our talks typically cover a broad range of issues including learning and memory, motivation and emotion, evolution, reproductive behavior, psychopharmacology, behavioral neuroscience, and general comparative behavior. We traditionally award cash prizes for the outstanding graduate and undergraduate talks every year at the SWPA annual conference.

This year we have an outstanding cast of three keynote speakers who will address a variety of interesting topics at the meeting in San Antonio. One of SCPA's founders, Dr. Del Thiessen will discuss some of his recent work with animals on his ranch and how their behaviors have inspired him to revisit evolutionary and comparative theories from his previous research. Dr. Gary Muir will cover some of his research that investigates the neural basis of navigational behavior, particularly the role that the vestibular system plays in generating directional signals. Finally, Dr. Marilyn McGinnis will cover some of the findings from her lab and discuss the impact that animal research has had in understanding why people, specifically adolescents, abuse anabolic steroids. We enthusiastically invite all SWPA attendees to attend these keynote addresses and our scheduled data presentations.

Sincerely,

Dr. Russ Frohardt
2009 SCPA Program Chair *



Invited Speakers from our Adjunct Organizations

In addition to the SWPA Invited Speakers (see our previous newsletters or the website for highlights about Dr. Ernest Jouriles and Dr. Steve Davis), our adjunct organizations also bring in esteemed faculty and researchers to present their work at our convention. More details on all of them can be found at http://www.swpsych.org/conv_highlights.php.

Psi Chi Invited Speaker

Dr. Sam Gosling is an associate professor of psychology at the University of Texas at Austin. Dr. Gosling's talk is titled "*Personality in Everyday Contexts: What Your Stuff Says About You*," and it summarizes the data supporting the idea that the spaces in which we live and work are rich with information about what we are like.



SAMR Invited Speaker

Dr. Roger Kirk, is a Distinguished Professor of Psychology & Statistics and Master Teacher, Baylor university. Dr. Kirk's talk, *Analysis of Variance Revisited*, will examine the historical development of analysis of variance and nine computational approaches that have been used to compute sums of squares.



SCPA Invited Speakers

Dr. Thiessen is currently Professor Emeritus at the University of Texas in Austin and Chief Editor and author of Wall Street Tracker. Dr. Thiessen's talk, *Barnyard Psychology*, will address the relations between ethology, comparative psychology, and evolutionary principles. From there he will develop some of the barnyard themes, which will connect the progressive development of these related areas.



Dr. Muir received his B.A., M.A., and Ph.D. in Psychology from the University of Otago in Dunedin, New Zealand. His talk entitled "*Wrecking the argosy with a rusty nail: Understanding the neural basis of navigation*" will compare directional cells recorded in rats and chinchillas and how the vestibular system contributes to the generation of these spatial neural signals and navigational behavior.



Dr. McGinnis is currently a professor of Pharmacology at the Graduate School of Biomedical Sciences in the University of Texas Health Science Center in San Antonio. In her talk, "*Anabolic steroid abuse by adolescents: what have we learned from animal research?*" Dr. McGinnis will summarize current findings from her research, which focuses on the effects of anabolic-androgenic steroids (AAS) on the brain and behavior.

*



Mark your calendars for the SWPA Social and the SWPA Awards and Business Meeting!



The revitalized SWPA Social will be held on Thursday night from 5:00 – 7:00 p.m.. At the social we will have complementary hors d'oeuvres, a cash bar, door prizes, and great conversations! Psi Chi will again donate drink tickets to students for non-alcoholic beverages. As part of our mission to foster exchange between faculty and students from different organizations, we will also retain the Topic Tables where faculty with expertise in different areas will lead discussions and answer questions about their area.

On Friday afternoon, following the President's talk, we will have the SWPA Awards and Business Meeting. All members are encouraged to attend so that they can learn about our organization, congratulate our newly-elected officers, offer input, and recognize our research award winners and others who have contributed to SWPA.



The Council for the Texas Association for Infant Mental Health

The Council for the Texas Association for Infant Mental Health (TAIMH) has convened to begin preparations for their biennial conference, which will be held in Dallas, Texas January 8-9, 2010. The TAIMH is an interdisciplinary professional organization established in 1980 with an annual membership of over 300 infant and family professionals. The Texas mission of this affiliate of the World Association for Infant Mental Health is to build community awareness of the critical importance of the first three years of life, support conditions that enhance the quality of infant and toddler/caregiver relationships, advocate for policies and practice that support healthy infant and child development, and educate the birth to three workforce in best practice. For further information on the organization, visit the website <http://www.taimh.org/index.html>.

Since 1990, the TAIMH has given the T. Berry Brazelton Infant Mental Health Advocacy Award to an individual who has impacted advocacy efforts in Texas for babies and young children. Criteria for the award include:

1. Participation in advocacy efforts above and beyond the regular scope of one's profession on behalf of the mental health of infants and their families in Texas that have resulted in positive system changes in areas such as public policy, agency practices, or hospital, educational, or child care settings.
2. Results or impact of advisory efforts should have occurred or be evident during the previous two years (2007-2009).

To nominate an individual for the 2010 T. Berry Brazelton Infant Mental Health Advocacy Award, please submit a letter of intent to the Texas Association for Infant Mental Health, Advocacy Award Nomination, 1199 S. Beltline Rd, Ste. 100, Coppell, TX, 75019. The letter must include:

- Name of the nominee
- Nominee's affiliation(s)
- Description of the advocacy activities
- Description of the impact or result of the advocacy activities.

Nominees that meet the initial qualifications will be sent a formal nomination application.

Should you have any further questions about the conference or the award, please contact the Southwestern Psychological Association representative to the TAIMH Council: Anna Brandon, Ph.D., by email at anna.brandon@utsouthwestern.edu. *

More San Antonio

[The Alamo](#)



[Mission San Jose](#)



[Sea World San Antonio](#)



[San Antonio Zoological Gardens and Aquarium](#)



[Shopping](#)



Student's Corner



Strategies for Getting the Most from Your Convention Experience

Whitney N. Pierce
Northeastern State University, OK

The 2009 SWPA convention promises to have an enjoyable program full of insightful presentations and opportunities to expand your professional network. You'll want to make the most of this annual event. Planning ahead can help you minimize stress and maximize your convention experience.

Make your travel arrangements and book your hotel rooms as early as possible. Availability of flights and rooms will become scarcer as the convention nears, and no one needs added stress the week before a convention. Try to stay at the hotel hosting the convention or as close as possible to cut down on hectic morning commutes and parking issues. The convention room rate is the same for one up to four people in the room, so consider sharing a room to keep costs down.

The full program for the 2009 SWPA convention is expected to be online no later than the beginning of March, so all attendees will have ample time to highlight the presentations they wish to see. Most people come to conventions in groups, so if two particularly interesting presentations are scheduled for the same time, consider splitting up to cover more ground. Take notes or grab an extra handout and you can share what you learned at dinner. It is okay to attend only one or two talks in a talk session (normally there will be four to six talks per session), but be sure to enter or leave the presentation room in between talks, not in the middle of someone's talk. While you're

looking over the schedule don't forget to allow at least 15 minutes on either side of your own presentation obligations. Really take advantage of coming to the convention; the more sessions you attend, the more you will benefit. It's fun to enjoy the hotel pool and surrounding attractions, but save most of that for the evenings when there are no other convention events scheduled. However, it is nice to take a break if there is no session at a given time that really interests you. When you take a break, consider staying in the convention area and chatting with people you meet, or, if you're a Psi Chi member, you can relax in their hospitality suite and get a snack.



There is no better opportunity to network than at a professional convention. Dress office casual and bring your business cards or have your contact information printed on presentation handouts. You can explore graduate school opportunities with professors and program directors, meet contacts for future research collaboration, or even discuss career prospects with potential employers. Don't be afraid to introduce yourself and ask questions regarding presentations (people like it when others ask them about their work!). It may be more comfortable to stick with your friends from your own school, but by making an effort to meet people from other schools you will enhance your experience (and maybe make a valuable new contact). The social on Thursday night will be a great time to talk to people from all over our nine-state region (plus there will be some free appetizers and door prizes).



In sum, professional conventions call for appropriate decorum, but you needn't be dull to make a good impression. Just make sure to observe meeting etiquette during presentation sessions and practice a bit of good sense the rest of the weekend. *

Upcoming Conferences and Events of Interest

The main event: **SWPA!
April 2-4, 2009
Sheraton Gunter Hotel, San Antonio**

Other Psychology Conferences in SWPA Region

1. February 18-21, 2009: **Southeastern Psychological Association (SEPA)**, New Orleans, LA, <http://www.sepaonline.com/>
2. April 16-18, 2009, **Rocky Mountain Psychological Association (RMPA)**, Albuquerque, NM, <http://www.rockymountainpsych.org/>
3. September 25, 2009: **Oklahoma Network for Teaching of Psychology (ONTOP)**, Oklahoma City, Oklahoma

Other Psychology Conferences Outside the SWPA Region

1. March 20-21, 2009: **23rd Annual Conference on the Teaching of Psychology: Ideas and Innovation**, Westchester, NY, <http://www.farmingdale.edu/psyconf>
2. March 5-8, 2009: **Eastern Psychological Association (EPA)**, Pittsburgh, PA, <http://www.easternpsychological.org/>
3. April 23-26, 2009, **Western Psychological Association (WPA)**, Portland, <http://www.westernpsych.org/>
4. April 30-May 2, 2009, **Midwestern Psychological Association (MPA)**, Chicago, IL, <http://www.midwesternpsych.org/>
5. 2009 **APS convention**, May 22 – 25, 2009, in San Francisco, CA
6. 117th Annual APA Convention, Toronto, Ontario, Canada, August 6-9, 2009 (Thurs-Sun)

Graduate Programs

More details available online at:
http://www.swpsych.org/resources_announce.php

1. The MSCP (Master of Science in Counseling Psychology) program at [Louisiana State University](http://www.lsu.edu) Shreveport is a 48-hour degree program designed to develop professional counselors, as well as to prepare students for further graduate study in related doctoral programs. This program allows students to become licensed as a professional counselor in Louisiana and other states. A 60-hour track is available for students who plan to practice in states where this is a requirement. A thesis option is offered for students who are interested, or who plan to continue on to doctoral studies.
2. The non-thesis master's program at [Stephen F. Austin State University](http://www.sfu.edu) is primarily designed to augment the credentials of those persons who were near the top of the waiting list for admission to doctoral programs in psychology, but ultimately did not receive an offer. This one-year curriculum will increase individuals' chances of being accepted upon reapplication to doctoral programs by enabling them to earn grades in graduate-level courses and to gain valuable research and teaching experience.
3. The Lifespan Developmental Psychology Ph.D. program at [Oklahoma State University](http://www.okstate.edu) is currently in a growth mode. The primary goal of the program is produce scholars-researchers with sufficient breadth and depth to permit successful independent and significant research. While major emphasis is given to the preparation for research, organized and concerted effort is also made to give students the necessary background for teaching, practice, or any combination of these fields. The department admits only full-time students planning to work toward the Ph.D. degree.

Job Postings

More details available online at
http://www.swpsych.org/resources_announce.php

Assistant Professor of Psychology

Southern Arkansas University
[posted December 4, 2008]

Nine-month tenure-track position starting August 2009. Duties: Teach in the Behavioral and Social Science Department from among Developmental Psychology, Child Psychology, Adolescent Psychology, General Psychology, Professional Issues, and other courses within the area of development including Special Topics as needed; advise student majors; coordinate and conduct research; supervise undergraduate research; participate in scholarly activity; promote service.